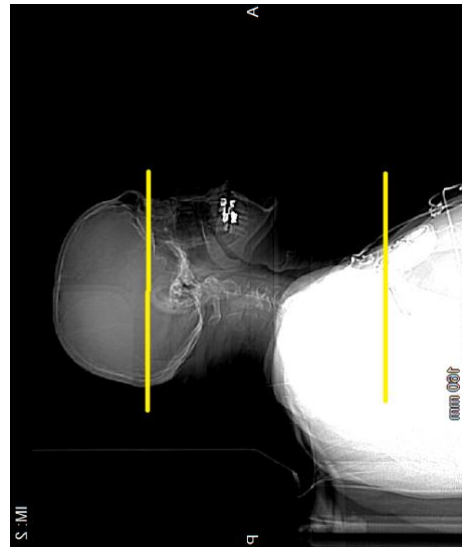
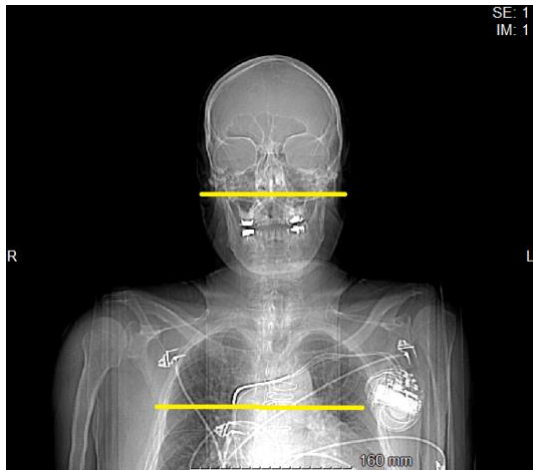


# Synergy 4D Parathyroid CT Technique

Automatic exposure control (range, 100–750 mA) at 120 kV with a noise index setting of 18.

Coverage: Craniocaudal coverage from the external auditory meatus to 2 cm below the carina.



FOV: Small field of view, generally 18 cm or less.

## Acquisition

Detector configuration for the acquisition: 0.6 mm; images reconstructed at a 3-mm thickness with 3mm spacing in the axial and coronal planes.

## Imaging sequence:

1. An initial unenhanced scan to be obtained.
2. IV contrast injection of 100 mL of nonionic contrast material (iohexol, Omnipaque 350, GE Healthcare) at 3 mL/s.
3. Phases acquired at 30, 60, and 90 seconds after the initiation of IV contrast administration.

## Reconstruction:

1. Sagittal & Coronal Soft Tissue 2 x 2 mm.
2. MIP Sag & Coronal 4 mm.